

Holder for connecting suction cup

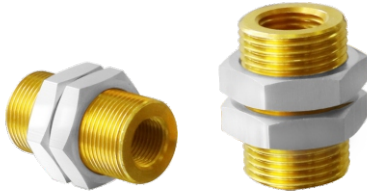
Holder for connecting suction cup MVS-GE

Connection: G1/8" to G1/4"

Holder for connecting suction cup MVS-GE

Introduction and application

- ◆ For fastening a suction cup to a metal plate.
- ◆ Plug-in connection for vacuum hose



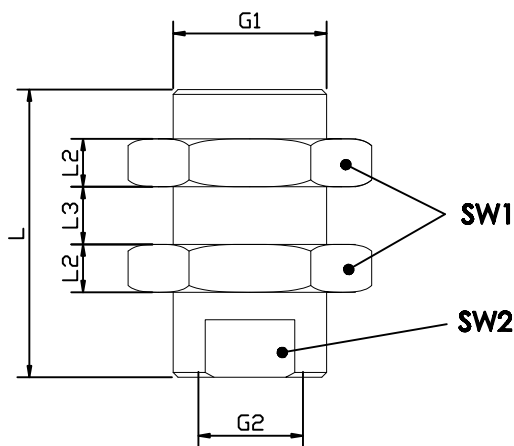
Ordering Guide Holder for connecting suction cup MVS-GE

Type	Connecting thread of suction cup	Vacuum connection thread	Installation length[mm]	Ordering Data
MVS-GE M16×1-AG G1/8-IG 30	M16 × -AG	G1/8-IG	30	90.04.01.00141
MVS-GE M20×1.5-AG G1/4-IG 30	M20 × 1.5-AG	G1/4-IG	30	90.04.01.00142

Note:AG(external thread) IG(internal thread)

Design Data Holder for connecting suction cup MVS-GE

MVS-GE



Type	Dimensions[mm]					
	G1	G2	L	L2	SW1	SW2
MVS-GE M16×1-AG G1/8-IG 30	M16×1-M	G1/8"-F	30	5	22	13
MVS-GE M20×1.5-AG G1/4-IG 30	M20×1.5-M	G1/4"-F	30	5	24	17